

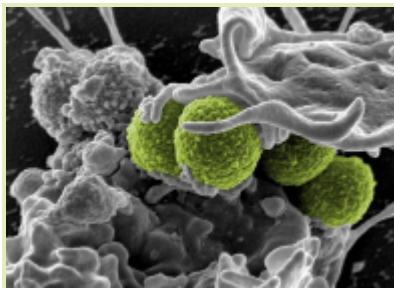
The Importance of Not Being Too Attached: Pharmaceutical Equipment Characteristics and Bacterial Attachment



Tim Sandle

By

Oct 25, 2021 10:13 am EDT



Attachment can lead to adhesion, and the two are different but related concepts. Attachment is a physical activity; as bacteria approach a surface, cell appendages (such as fimbriae, pili, and flagella) may stick to it. Adhesion can occur when adhesive molecules expressed on the bacterial surface bind to host surface receptors; this is associated with biofilm formation (2). In both cases, bacteria can sense that they are in contact with a surface and provide the initial cellular responses to surface contact and subsequent adhesion. Factors like temperature and pH influence the bacterial adhesion...

Source URL: <http://www.ivtnetwork.com/article/importance-not-being-too-attached-pharmaceutical-equipment-characteristics-and-bacterial-0>